



CONGREGATION  
**Kol Ami**  
VOICE OF MY PEOPLE

## WORSHIP SERVICES

**WEDNESDAY, Oct. 1, 6:00 p.m.**  
*Tashlikh* Service at High School Park

**FRIDAY, Oct. 3, 7:30 p.m.**  
Our first 'First Friday' Service;  
Prayers and Music of *Yom Kippur*.  
A Look Ahead... (see page 4 for details)

**SATURDAY, Oct. 4, 10:00 a.m.**  
*Torah* Dialogue; *Shabbat Shuvah* -  
the intermediate *Shabbat* during  
the High Holy Days

**WEDNESDAY, Oct. 8, 8:00 p.m.**  
*Kol Nidrei* Service

**THURSDAY, Oct. 9**  
*Yom Kippur* Services  
(see page 5 for schedule)

**FRIDAY, Oct. 10, 7:30 p.m.**  
*erev Shabbat* Service

**SATURDAY, Oct. 11, 10:00 a.m.**  
*Bar Mitzvah* of Daniel Fishbein

**MONDAY, Oct. 13, 7:00 p.m.**  
*erev Sukkot* Service

**TUESDAY, Oct. 14, 10:00 a.m.**  
*Sukkot* Service

**FRIDAY, Oct. 17, 7:30 p.m.**  
*erev Shabbat* Service; the adult choir  
will add their voices

**SATURDAY, Oct. 18, 10:00 a.m.**  
*Torah* Dialogue and Jewish Journeys

**MONDAY, Oct. 20, 7:00 p.m.**  
*erev Simchat Torah* - Consecration  
Service

*continued page 2*

## HIGH HOLY DAY HAPPENINGS



"JEWS PRAYING IN THE SYNAGOGUE ON YOM KIPPUR," PAINTED BY MAURYCZ GOTTLIEB, 1878

**Tashlikh Service - Bridge to Yom Kippur**  
**Wed., October 1, at High School Park**  
**Bring Your Own Dinner, Snacks & Blanket**  
**Dinner 5:30 p.m.; Tashlikh Service 6:00 p.m.**

*Tashlikh*, from the Hebrew word meaning "to send forth," is a service of readings and reflections from Psalms and Prophetic writings. Traditionally held on the second day of *Rosh Hashanah* and dating back to the Middle Ages, the *Tashlikh* service is a tribute to the Creator, to whose work of creation, the fish were the first witnesses, hence the proximity to a natural body of water ("Let waters bring forth swarms of living creatures."). We will symbolically cast our transgressions across the water to be carried away, preparing us for the Day of Atonement just a week later, at *Kol Nidrei* on Wednesday, October 8. Families welcome.

### **Yom Kippur Services, Thursday, October 9**

#### Adult Service, 10:00 a.m.

Child care will be available for age 2 through grade 2. Contact Laurie Langman at 215-654-9717 or [laurierobin@verizon.net](mailto:laurierobin@verizon.net).

#### Youth Service (Grades 3-6) in the Chapel at 10:00 a.m.

Our *Yom Kippur* morning service for students in grades 3 through 6 will be under the direction of Jeffrey Schwartz, son of Cantorial Soloist Rebecca Schwartz. Jeffrey has been a song leader at worship services in reform synagogues, sings with *HaZamir* (The International Jewish High School Choir), and performed at Carnegie Hall last year. While adults worship in the sanctuary, our young adults will be with Jeff, using *Gates of Repentance for Young People* as their prayer book.

#### Children's-Family Service at 2:00 p.m.

This service is for preschool through grade 2 children and their families. Feel free to invite friends and neighbors; this service is free and open to the public. As in previous years, children will be joined by their parents and grandparents on *Yom Kippur* afternoon for our Children's-Family Service to ensure a meaningful, interactive experience using a special age-appropriate prayer book.

*continued page 4*

## WORSHIP SERVICES

(continued from page 1)

**TUESDAY, Oct. 21, 10:00 a.m.**

*Simchat Torah* Service

**FRIDAY, Oct. 24**

**6:00 p.m.** - "Kids@Kol Ami" *Shabbat* Service for Nursery School through 2nd Grade; the student choir will add their voices

**8:00 p.m.** - *erev Shabbat* Service

**SATURDAY, Oct. 25, 10:00 a.m.**

*Torah* Dialogue and Jewish Journeys

**FRIDAY, Oct. 31, 7:30 p.m.**

*erev Shabbat* Service

**SATURDAY, Nov. 1, 10:00 a.m.**

*Torah* Dialogue

- Taylor Appel will read from the *Torah* on the 3rd anniversary of her *Bat Mitzvah*
- Ellie Kaplan will read from the *Torah* on the 1st anniversary of her *Bat Mitzvah* ■

## TORAH & HAFTARAH PORTIONS

**October 4** - *Shabbat Shuvah*

Deuteronomy 31:1-30

Hosea 14:2-10

**October 11** - *Ha'azinu*

Deuteronomy 32:1-52

II Samuel 22

**October 18** - *Chol haMoed Sukkot*

Exodus 33:12-34:26

Ezekiel 38:18-39:16

**October 25** - *Beresbit*

Genesis 1:1-6:8, Isaiah 42:5-43:10 ■

## NEW MEMBERS

Congregation Kol Ami welcomes the following new members:

- Jeffrey & Robynn Margasak and their children, Jacob and Jenna
- Christopher and Pamela Marquette, and their children Ian and Lia
- Howard & Ann Weinblatt ■

## PRESIDENT'S LETTER

*Shalom!* As I recently announced on *Rosh Hashbanah*, we have completed our transaction with Federation Housing for the Chestnutwood property. This closes the final chapter in our multi-year, multi-property real estate venture. We owe a huge debt of gratitude to those who managed the process to its conclusion. We are very fortunate that we were able to complete these transactions and move forward with our vision and mission.

Now we can truly get to work on implementing the goals we laid out in our congregational business plan. We have goals in six key areas:

**Membership**  
**Spirituality**  
**Education**  
**Programming**  
**Campus**  
**Finance**

There are many ways that you can make a difference in building our community. Telling your friends about our warm community and encouraging them to join, planning and implementing events, and helping keep our website up to date are just some of the examples of how you can contribute. Each of you has talents to contribute, consider what you can give back to your community. The reason Kol Ami is a special place is because we make it so through our actions toward each other and our contributions to the ongoing life of the synagogue. By getting involved, you have the added benefit of connecting with others who, as members of the same community, share similar values and interests.

The overarching goal of our business plan is to grow our membership and explore strategic partnerships so that we can, within three to five years, run at break-even and be self-sustaining. We are projecting a substantial operating loss this year, meaning that our programs and staff cost more than the amount that we charge in dues and related fees. To fund this loss, we'll need additional funds as we move forward. As I mentioned in my *Rosh Hashbanah* speech, each of your contributions to the High Holy Day appeal make a difference in our growth and future.

Warmly,

Jennifer Streitwieser

President, Congregation Kol Ami

(Mobile: 215-421-8270, [president@kolami.info](mailto:president@kolami.info))

### **A THANK-YOU FROM THE PENNSYLVANIA SOCIETY FOR THE PREVENTION OF CRUELTY TO ANIMALS (PSPCA)**

**by Emily Simmons, Development Associate, Philadelphia, PA**

Thank you so much for choosing to donate a portion of your *tzedakah* to the PCPCA! We are so glad to have your support; it always means a great deal to us to receive donations from young people such as yourselves because it indicates that you are aware of how important compassion for animals truly is. As voiceless creatures, they depend on us completely for their health, safety, and well-being. Again, on behalf of the animals, thank you! ■

# FROM THE RABBI'S STUDY

Rabbi Elliot J. Holin

## BLESSINGS ABOUND

In early September, I stood before the open ark with a member of our congregation as she celebrated her conversion to Judaism. She was surrounded by her family—husband, daughter, and *machatunim*—and we were joined by Jennifer Streitwieser, president of our synagogue. As we began the service, I spoke about the intensive period of study this young woman had gone through—five months of weekly classes, readings, and discussions about major trends in Jewish history as well as rituals, traditions, customs, and values, including *Torah* text and “God talk”—with people on similar journeys in the company of rabbis. It was significant that Jennifer was with us because the joy expressed by this young woman is something in which our congregation rejoices. We are eager for her family to grow and flourish in our midst.

A few days later, I thought about the child of a family for whom I care deeply. This young adult converted from Judaism to a different faith in which she found greater meaning. I confess that when I heard the news I felt a sense of loss: not that she had been particularly active at her synagogue in a distant locale, but the decision felt like a repudiation of what we say we value. The more I thought about it, the more I wondered if her synagogue had ever conveyed to her a sense of Jewish joy. The sum total of whatever she experienced within its walls did not give her a sense of belonging when she was there. She did not feel uplifted during services and was rarely greeted upon entering the synagogue.

At this time of year, we embark on Jewish journeys again and for the first time. Paths are familiar and new. We are in the midst of our season of blessings: *Rosh Hashanah* leads into *Yom Kippur*, and from there to *Sukkot* and *Simchat Torah*. We advance from introspection to atonement, and lest we become too self-centered, we immediately reengage the world on *Sukkot* and then celebrate the covenant that encompasses values on *Simchat Torah*. We reflect and resolve. We *daven* and on *Simchat Torah* we dance with the scrolls in our arms as they make their way through the congregation. When else do we celebrate joy in the synagogue? Other than celebratory life-cycle events and holy days such as these, when do we truly connect with each other?

Martin Buber said, “The older we get, the greater becomes our inclination to give thanks, especially heavenward. We feel more strongly than we could possibly have ever felt before that life is a free gift, and [we should] receive every unqualifiedly good hour [that] gratefully reaches our hands as an unexpected gift. But we also feel, again and again, an urge to thank our fellow [human beings], even if he or she has not done anything special for us. For what, then? For really meeting me when we met; for opening his eyes, and not mistaking me for someone else; for opening his ears, and listening carefully to what I had to say to him; indeed, for opening up to me what I really wanted to address—his securely locked heart.”

The synagogue should be a place where we—to borrow from Buber’s phrase—“really meet” each other. Some of my most powerful experiences with you have occurred in front of the ark: at my sons’ *Bar Mitzvah* ceremonies; with a family mourning the death of their father and grandfather as they stood together with their friends during a break in our High Holy Day services a few years ago; a *Shabbat* service when one of our members talked about times in his life when

he felt the presence of God. One of the most memorable occasions occurred at a *Shabbat* service this past August when I invited parents and their college-bound children to join me in front of the ark a week before most of them would be leaving town to move onto their college campuses. Parents stood with their child and quietly spoke to him or her. Some parental blessings were extemporaneous, while others were the traditional Jewish blessing of a parent over their son or daughter, or the priestly blessing that is recited at the conclusion of every service. I saw fathers, mothers, sons, and daughters embracing, many with tears in their eyes. The essential message was, “We are always here for you.”

This is the message that the synagogue, its leadership, and members convey: “We are always here for you.” During times of change, this is the constant. May we continue to be blessings for each other. ■

## COMMITTEE MEETINGS

### ADULT EDUCATION COMMITTEE

**Monday, October 14, at 7:30 p.m.**

Co-chairs: Andy Cassel at 215-635-3309 and Alan Gershenson at 215-887-3994

### FINANCE COMMITTEE

**Thursday, October 2, at 7:30 p.m.**

Co-Chairs: Mitch Goldenberg at 215-635-1651 and Ted Kapnek at 215-641-9955

### LANDSCAPE & PROPERTY

### ENHANCEMENT COMMITTEE

**Monday, October 6, at 7:30 p.m.**

Chair: Marshall Schafer at 215-663-0228

### RELIGIOUS SCHOOL COMMITTEE

**Sunday, October 26, at 10:00 a.m.**

Co-chairs: Jodi Bloch, 215-641-4547 and Linda Jacobs, 856-439-1410

### WORSHIP ENHANCEMENT COMMITTEE

**Sunday, October 19, at 10:45 a.m.**

Co-chairs: Jeff Cohen at 215-635-3232 and David Hyman at 215-496-7224

We welcome new members to join any committee or just sit in on a meeting or two. For more info about a committee, please contact its chairperson. ■

## HIGH HOLY DAY HAPPENINGS

(continued from page 1)

### Yom Kippur (continued)

#### Meditative Service, 3:00 p.m.

Our High Holy Day Meditative Service provides a pleasant and meaningful interlude between the Children's-Family Service and the Afternoon Service, a way for us to continue to pray together with readings culled from different sources as well as those written by our own members. We invite you to submit creative or favorite writings by October 1 to Spiritual Growth Group chairpersons Sara Chernoff (sarabhc@aol.com) or Natalie Dyen (nat.dyen@verizon.net) for inclusion in the service.

#### Afternoon Service, 3:45 p.m.

The readings in this service express the ritual power of "The Day of Awe" to be a transforming experience for us, as we follow the *kohen gadol* in his preparations to make atonement for himself and our People.

#### Yizkor-Neilah (Memorial) Service, 5:30 p.m.

A booklet listing the names of loved ones is created from information provided by you on your membership form. If you wish to make any additions or corrections for the booklet, send this information to Elaine Stevens, Executive Director at [execdir@kolami.info](mailto:execdir@kolami.info) by October 1.

## High Holy Day Food Drive to Benefit the Mitzvah Food Project



Many of our neighbors in the Delaware Valley live with constant hunger pains. They are not just the homeless; they are elderly men and women, single parents with children, and hard-working people who have fallen on hard times. This year, we are working in partnership with the *Mitzvah* Food Project to ensure that those in need

benefit from your largesse. Items needed include: **cold cereal** (no bulk sizes), **tuna** and **salmon** (lower salt preferred), **peanut butter** (lower salt preferred), **jelly** (lower sugar preferred), **canned soup** (lower salt preferred), **shelf-stable milk/soy milk** (quart-size dry packets or 8- to 16-ounce boxes only), and **condiments**. We cannot accept: opened or outdated food, glass (only plastic or canned foods), or pasta and rice (cereal is the only dry good that we can accept).

Empty shopping bags will be available in the lobby as you leave *Rosh Hashanah* services. Please take some bags home and fill them with much-needed nonperishable food. Bring your filled shopping bags back to services on *Yom Kippur* on October 9. ■

## CONGREGATION SERVICES

### **"First Friday" erev Shabbat Dinner and Service Fri., Oct. 3 - Dinner 6:30 p.m.; Service 7:30 p.m. (for October birthday and anniversary blessings)**

If you or someone in your family is celebrating a birthday or anniversary in October, please join us for a special First Friday *erev Shabbat* dinner and service. Rabbi Holin will bless everyone with an October *simcha* under a *tallit* in front of the ark. Watch for your invitation for this special *Shabbat simcha*. You can BYOD (bring your own dinner) or order dinner in advance to be waiting for you when you arrive.

Rabbi Holin will continue to send personal letters to everyone celebrating a significant birthday or anniversary ending with 0 or 5 (for example: 30, 45, 60). If you have a special 0 or 5 birthday or anniversary, you will be invited to participate in any Friday service in your month by blessing the candles or *challah* or reciting the *Kiddush* or at any Saturday service that month by carrying or blessing the *Torah*.

### **Prayers and Music of Yom Kippur: A look ahead at the words and melodies that define this holiest day on the Jewish calendar Friday, October 3, at 7:30 p.m.**

Rabbi Holin and Cantorial Soloist Rebecca Schwartz will explore the liturgy and music that define the *Yom Kippur* services to ensure familiarity on this holiest day of the year:

*Kol Nidrei* (*Gates of Repentance*, p. 252): The "song of *Yom Kippur*" is so identified with this holy day that the evening service bears its name. "Let all our vows be null and void": does this refer to past vows broken or those we will not fulfill? Why does everyone stand during *Kol Nidrei*, even when we are not responsible for all the transgressions that are recited?

*Chatzki Kaddish* (p. 259): These are familiar words chanted at our *Shabbat* morning services, but how does the melody differ this time of year?

*Ashamnu Bahadnu Gazabnu* (p. 269): "We are guilty, we are rebellious [or faithless], we have torn away [from the Covenant]." Why is the litany of confession so specific? What does its melody suggest about the intentionality of its words? How does the literal Hebrew differ from the English translation?

*Ahl chet sheb'chatabnu* (p. 271): "The sin we have committed against You." What is the difference between transgression and sin? How are we to seek atonement?

"We are Your People" (p. 279): "You are our King...our Portion...our Shepherd...our Keeper...our Friend." This uplifting acknowledgment of Covenant is a song of praise to The Holy One.



**Join us to “Celebrate the Land” at our erev Sukkot Service and Sukkot Morning Service  
 Mon., Oct. 13, at 7:00 p.m. & Tues., Oct. 14, at 10:00 a.m.**

“After the gathering of your threshing floor and your vat, you shall hold the Feast of Booths for seven days...for Adonai your God will bless all your crops and

all your undertakings, and you shall have nothing but joy.” (Deut. 16: 13,15)

“Freedom. It isn’t just once to walk out under the Milky Way, feeling the rivers of light, the fields of dark – freedom is daily, prose bound, routine remembering. Putting together inch by inch the starry worlds, from all the lost collection.” (Mishkan T’filah)

Children and adults, join Rabbi Holin and Rebecca to rejoice with the *lulav* and *etrog* at a joyful evening service, and adults during a special service and *Torah* reading the next morning! Let your senses come alive!

“I thank you God for this most amazing day: for the leaping greenly spirits of trees and a blue true dream of sky; and for everything which is natural which is infinite which is yes.” (Mishkan T’filah)

### HIGH HOLY DAYS CALENDAR 2008

<i>Tashlikh</i>	Wednesday, October 1	6:00 p.m.
<i>Kol Nidrei</i>	Wednesday, October 8	8:00 p.m.
<i>Yom Kippur</i>	Thursday, October 9	
	– Adult Service	10:00 a.m.
	– Youth Service (grades 3-6)	10:00 a.m.
	– Children’s-Family Service	2:00 p.m.
	– Meditative Service	3:00 p.m.
	– Afternoon Service	3:45 p.m.
	– <i>Yizkor-Neilah</i> Service	5:30 p.m.
<i>erev Sukkot</i>	Monday, October 13	7:00 p.m.
<i>Sukkot</i>	Tuesday, October 14	10:00 a.m.
<i>erev Simchat</i>	Monday, October 20	7:00 p.m.
<i>Simchat</i>	Tuesday, October 21	10:00 a.m.

**Join us to Rejoice with the Torah at our erev Simchat Torah-Consecration Service and Simchat Torah Morning Service  
 Monday, October 20, at 7:00 p.m. and Tuesday, October 21, at 10:00 a.m.**

“When the king is seated on his royal throne, he shall have a copy of the text of *Torah* written for him on a scroll...Let him read it all his life, so that he may learn to revere the Lord...and thus he will not act haughtily toward his fellows or deviate from the Instruction.” (Deut. 17:18-20)



“When God began to create...” (Genesis 1:1)

Join us at these very special services! At our *erev Simchat Torah* Service we give each new student in our Religious School his or her own small *Sefer Torah* and personal Consecration Certificate, and bless them and their families under a large *tallit* in front of the ark. We joyfully pass the *Torah* Scrolls hand to hand as they make their way through the sanctuary, accompanied by songs. We read from the very end of Deuteronomy and immediately commence in Genesis. Children and adults will surround the *Torah* Scrolls as a visual affirmation of the words “from generation to generation.”

At our *Simchat Torah* Morning Service we will again rejoice as we read from the *Torah* Scrolls and talk about the meaning of *Torah* in this contemporary age.

“As I awake, let this be my thought:  
 May my day be filled with acts of loving-kindness.  
 Let me be drawn to learning and discernment,  
 And may my actions be shaped by *mitzvot*.” (Mishkan T’filah) ■

## FROM THE DIRECTOR OF EDUCATION

It is often said that the holidays are never late...they are always right on time. Regardless, they are here, and with them, a month full of prayer, reflection, and community. And in the halls of Kol Ami religious school, we combine all of those things with learning, fun, and games.

October is going to be an incredibly busy month! We will get off to a bang with our first Color Wars challenge. On **October 5**, grades 3 through 7 will join forces to rise to the occasion and astonish us all with their creativity and energy. Split into their Color War teams, they will be faced with five holiday-related challenges that will require teamwork, ingenuity, flexibility, and a great sense of humor. We will walk through the challenges, clarify the goals, and answer any questions that may arise. Our seventh-grade leaders will then help divide their teams into groups, each of whom will face one of the challenges in the time allotted. After the tasks are completed, the groups will return to the sanctuary amid cheers and applause, energy and joy, to share with each other all that they were able to accomplish in the day. Points earned by each team will be counted toward the year-end totals. It will be an incredible day...don't miss it!

Of course we can't let the older grades have all of the fun...on **October 19** all of our classes will get a chance to visit with Rabbi Holin in our beautiful *sukkah*. There they will enjoy some nosh and shake, shake, shake that *lulav*. It's a great way to spend a morning learning and celebrating together.

Finally, on **October 26**, we will have our first Family Education Day. The kindergarten and first-grade classes and their families will come together for a chance to study with me. We will spend the morning getting to know each other while we explore the gift of *Shabbat*. It is a wonderful chance to make connections and show our kids that it is never too late to learn!

So there it is, a month full of education, bonding, and fun: all to be experienced as we welcome in the New Year and pray that it will be sweet.

I wish you all a Happy and Healthy New Year.

*Shanah Tova,*  
Rabbi Selilah Kalev

## YOUTH GROUP NEWS

### Junior Youth Group Sukkah Party (Grades 4 & 5) Sunday, October 12, 1:30 to 3:30 p.m.

Come help build and decorate the Holtzman-Gonzalez *sukkah*! We'll cover the roof with bamboo fronds, hang decorations in the *sukkah*, sing some songs, play some games, and have some delicious fall treats to eat and drink. All fourth and fifth graders are invited; parents are welcome to come and help too. Please wear long pants and bring garden gloves for handling bamboo. For more information, call Mrs. Holtzman at 215-635-0667. See you at the *sukkah*! ■



### ARTIST OF THE MONTH: DEBRA KAPNEK

Debra, a Philadelphia-born painter, began to study art at Temple University. She moved to Israel in 1974, and in 1979, the city of Haifa sponsored her first one-person exhibit. She also attended George Washington University in 1980 on a full fellowship for merit and graduated with her MFA.

Among her commissions are Hebrew graphic designs for Federations in Allentown and Baltimore, and a series of portraits of Ethiopian Jews created in 1990 for the American Association for Ethiopian Jews. This series was purchased and is on permanent exhibit at the University of Tel Aviv. Her first composition of six Holocaust survivors, "The Miracle of Survival," was purchased in 2001, and is now part of the permanent collection of the Florida Holocaust Museum.

Giclee prints on canvas are available of any painting exhibited by order or on her website at [www.kapnekfinearts.com](http://www.kapnekfinearts.com).

The Gallery at Kol Ami is open to the public on Wednesday from 4:00-8:00 p.m. and Sunday from 10:00 a.m.-12:00 p.m. If religious school is closed, the gallery is closed as well. All works are for sale. ■



## SYNAGOGUE SPOTLIGHT

*Making a difference in the Kol Ami  
Community through member involvement*

### EVENTS SPOTLIGHT

#### **Sukkot and Simchat Torah Services**

This year, we inaugurate morning *Sukkot* and *Simchat Torah* services, in addition to our evening services, led by Rabbi Elliot Holin and Cantorial Soloist Rebecca Schwartz. Explore the meaning of the *Sukkot* Festival and celebrate the *Simchat Torah*, literally the “rejoicing with the *Torah*,” as we complete and begin again the reading of the *Torah*.

Mon., Oct. 13	7:00 p.m.	<i>erev Sukkot</i> Service
Tues., Oct. 14	10:00 a.m.	<i>Sukkot</i> Service
Mon., Oct. 20	7:00 p.m.	<i>erev Simchat Torah</i> - Consecration Service
Tues., Oct. 21	10:00 a.m.	<i>Simchat Torah</i> service

### CONTRIBUTIONS SPOTLIGHT

Remember to send in your High Holy Day pledge. Your contributions help us continue to build the bridge to our future. Contact Elaine Stevens at [execdir@kolami.info](mailto:execdir@kolami.info) or 215-635-3110 for more information or if you would like another pledge form.

### VOLUNTEER SPOTLIGHT

Do you have your own website? Do you dabble in technology? We need your help! We are looking for volunteers to help us update the news and calendar sections of [www.kolami.info](http://www.kolami.info) and help us build new sections for both members and the public. Contact Ellen Asam at 215-635-5598 or [basam@comcast.net](mailto:basam@comcast.net) if you are interested in helping out. This is a great opportunity for people who have time to do volunteer work on weekends or nights or who can't attend regular meetings but prefer to help from home. ■

## SYNAGOGUE *SIMCHAS*

*Mazel tov* to **Jean and Steve Ettinger** on the arrival of their grandson, Theo Samuel Nistler, son of Meryl and Tim Nistler, born on August 5. ■

## BAR MITZVAH OF DANIEL FISHBEIN SATURDAY, OCTOBER 11 AT 10:00 AM



Danny is in the seventh grade at Cedarbrook Middle School, and his favorite subject is history because he enjoys learning about the past. He is trying out for the school's soccer and baseball teams, and outside of school he plays travel soccer, tournament baseball, JJBL basketball, and tennis.

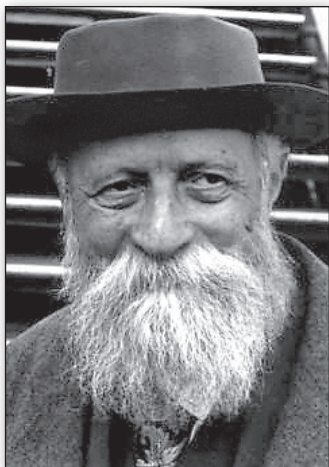
Danny delivers boxed food for the Jewish Relief Agency and PhilAbundance with his family and on *Mitzvah* Day helps clean up High School Park. He also collects money for food drives and visits the Abramson Center on the holy days. For his *Mitzvah* Project, he asked people to sponsor his 100-mile run to benefit the Pennsylvania Tourette Syndrome Association (PATSA) because his brother, Adam, has Tourette syndrome and the funds will help other families through PATSA.

“I am proud to be Jewish because on holidays it brings the family closer together. To me, half of being Jewish is about family traditions. I am proud to be Jewish because it makes me one of the few people in the world who is Jewish and I am proud to be one of the few. I really believe in some of the Jewish values and not all religions have some of the values that Judaism has.

One of my most instructive Jewish experiences has been learning about my grandma's heritage. She is a Holocaust survivor and has a great story. Her story helped me find out who I am as a Jew. It made me feel that it is so important to be Jewish. It feels good to know that Hitler did not succeed.

The verses that I chose to chant from my *Torah* Portion (Deuteronomy 32:1-12) are from a section called ‘The Song of Moses.’ Moses reminded the people to pray to God and to keep the faith because that is what got them this far. This applies to our lives as a wake-up call to pay more attention to our religion and go to synagogue once in a while.”

We congratulate Danny's parents, Joel and Rachel, and his siblings, Adam and Emma. ■



**The Philosophy of  
Martin Buber:  
“A Life of Dialogue”**

with Rabbi Holin

**DAY TRACK**

Wednesdays: October 29  
and November 5, 12, and 19  
from 9:00 a.m. to 10:30 a.m.

**EVENING TRACK**

Thursdays: October 16 and  
30 and November 6 and 13  
from 7:30 p.m. to 9:00 p.m.

Martin Buber (1878-1965) was born in Vienna. From 1896, he studied at the universities of Vienna, Leipzig, Zurich and finally at the University of Berlin. He joined the Zionist Movement in 1898 and was a delegate to the Third Zionist Congress in 1899. In 1904, at the age of 26, he began to study Hasidism and was so deeply moved by its religious message that he eventually published *Hasidism and Modern Man* (1958) and *The Origin and Meaning of Hasidism* (1960).

In 1916, he founded the monthly *Der Jude*, which for eight years was the most important organ of the Jewish renaissance movement in Central Europe. During the years following World War I, he became the spokesperson for what he called “Hebrew Humanism” according to which Zionism differed from other nationalistic movements: it should address itself to the needs of the Arabs. In a proposal to the Zionist Congress in 1921, Buber stated, “The Jewish people proclaims its desire to live in peace and brotherhood with the Arab people and to develop the common homeland into a republic in which both peoples will have the possibility of free development.”

In 1923, he published *I and Thou*, which contains the basic formulation of his philosophy of dialogue. Two years later, he began to lecture on Jewish Religion and Ethics at the University of Frankfurt and, in 1930, was appointed Professor of Religion. He was forced to leave in 1933 when the Nazis came to power. In 1938, he settled in Israel and was appointed Professor of Social Philosophy at the Hebrew University, where he taught until his retirement in 1951.

He was one of the leaders of *Ichud*, which advocated the establishment of a joint Arab-Israeli state. Even after the outbreak of the War of Independence, he called for a

harnessing of nationalistic impulses and a solution based on compromise.

His life and philosophy were based on I-Thou dialogue in which relationships are characterized by openness, directness, and being in the moment, in contrast to I-It dialogue, which lacks those qualities. Buber’s analysis of the I-Thou relationship led him to his notion of God as the Eternal Thou, a revelation that happens throughout our lives if we are open to receiving it. This relationship with God is achieved through the individual’s I-Thou relationship with people, animals, and nature. The dialogue between God and the People of Israel is achieved through Covenant in the quest to become a holy nation.

**Source texts:**

*I and Thou* (Simon & Schuster, Touchstone Edition, 1996)  
*The Martin Buber Reader - Essential Writings* (Macmillan, 2002)

Thursday, October 16, and Wednesday, October 29

Buber’s Life and Philosophy  
The Meaning of ‘I-It’ and ‘I-Thou’: Bridging the Gap

Thursday, October 30, and Wednesday, November 5

‘I-Thou’: Continued  
*Torah* and the Faith of Judaism

Thursday, November 6, and Wednesday, November 12

Jewish Soul and Jewish Renewal

Thursday, November 13, and Wednesday, November 19

Reinvigorating the Sense of Community

To RSVP for this course, contact our Executive Director, Elaine Stevens, at [execdir@kolami.info](mailto:execdir@kolami.info) or 215-635-3110 by October 10; specify day or evening track. The class is free. ■

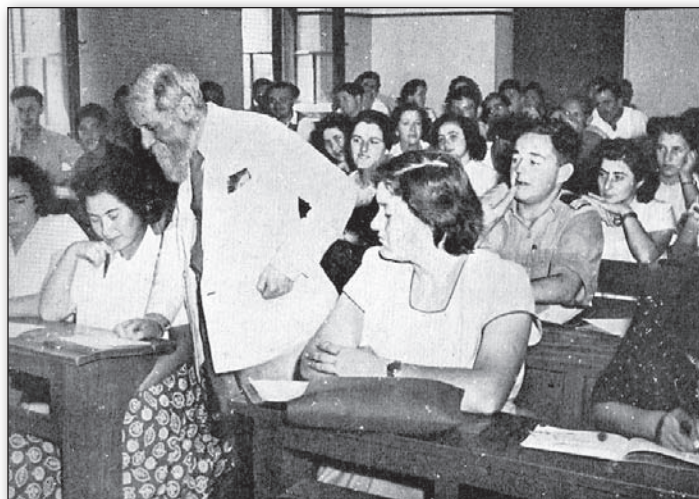


PHOTO OF MARTIN BUBER TEACHING (DATE UNKNOWN)



## WE WELCOME AUTHOR LUCETTE LAGNADO

“The Man in the White Sharkskin Suit: My Family’s Exodus from Old Cairo to the New World”

Sunday, October 19, at 3:00 p.m.



PHOTO CREDIT: KATHRYN SZOKA

Lucette Lagnado, an award-winning author, will join us at Kol Ami for a book reading and discussion of her book, *The Man in the White Sharkskin Suit: My Family’s Exodus from Old Cairo to the New World*. Lagnado, former editor at the *Forward* and currently an investigative reporter at *The Wall Street Journal*, was awarded the Jewish Book Council’s \$100,000 Sami Rohr Prize for Jewish Literature for her moving memoir.

The book traces almost 100 years of Lagnado’s family history with particular emphasis on her father. Lagnado’s father was a successful businessman who reveled in the nightlife of Old Cairo and became a tie salesman in Brooklyn, never feeling comfortable with life outside Egypt. His story is an echo of the tales of hundreds of thousands of Jewish immigrants who left their homes in Arab lands in the years following the creation of the State of Israel in 1948.

In an interview with the Jewish Literary Review, Lagnado shared these thoughts: “Writing this book was about trying to explore what I saw as the fall from grace of a man—my father—and also to grapple with what I saw as a lost piece of history, what happened to the lost culture of the Jews of Egypt. I had always known that once upon a time there existed an extraordinary multi-cultural society—one that embraced Jews and Moslems and Christians—and that was also incredibly glamorous and urbane, and that was the society, Old Cairo, that I sought to recreate in my book...the idea of a society that seems unthinkable to us Americans—one where Moslems and Jews and Christians could work together and socialize and party and then go off to their synagogues and churches and mosques to pray. We can’t even imagine that in Post-9/11 America, and I wanted to remind people that it was possible once upon a time—which I guess means it may be possible once again.”

Please join us for this free event. ■

ENCORE! ENCORE!

## VIOLINIST GIL MORGENSTERN REFLECTIONS: CHANGING KEYS

SUNDAY, OCTOBER 26, FROM 3:00-4:30 PM



PHOTO CREDIT: WENDY STULBERG

We are proud to announce the second season of our exciting Reflections Concert Series hosted by renowned violinist Gil Morgenstern. This year’s three concerts—focusing on the philosophy of impermanence and the endless cycle of birth, death, and rebirth—promise another season of entertaining and enlightening programs.

Reflections’ first performance to be held on Sunday, October 26, at 3:00 p.m., entitled *Changing Keys*, is inspired by the exquisite work of the Canadian sculptor and jewelry maker Elma Johnston McKay. For the past decade, McKay has worked on crafting 26 pairs of keys, each pair including a historical “inspiration” key—the key to the Old Synagogue of Prague in one case, the key to St. Peter’s Cathedral in another—and a new “interpretation” key, designed by McKay, to unlock insights into, say, the doorway that led the Jews of the Prague ghetto into fire and destruction in World War II or the Catholic doorway to heaven. The metaphor of keys as agents of transition is equally powerful in works of great music by such diverse composers as Ludwig van Beethoven, John Cage, Robert Schumann, John Harbison, and George Gershwin.

In *Changing Keys*, Reflections presents the stories and projected images of McKay as refractions—both inspiration and interpretation—of the works of these composers. Mr. Morgenstern’s special guest for this program will be the distinguished pianist Donald Berman. For more information, visit [www.gilmorgenstern.com](http://www.gilmorgenstern.com).

***This concert is made possible by Jeffrey Abrams and Margaret Barry. It is most appropriate for children older than 12 who are used to attending fine-arts events.***

The cost for individual concerts is \$18 for adults and \$10 for students aged 21 and younger. Light refreshments will be served. For reservations, please contact Elaine Stevens, Executive Director, at 215-635-3110, or send a check to her attention at Congregation Kol Ami, 8201 High School Road, Elkins Park, PA 19027. Kindly note the concert date of October 26, 2008, on the memo line of the check.

**Mark your calendars for future concerts!** Reflections: *Falling Bodies* will be held on Sunday, January 4, 2009, and *Whole Steppes* on Sunday, April 5, 2009. ■

## KOL AMI EVENTS

### KNIT 'N NOSH

Sunday, October 12, at 10:00 a.m.

Room 201

Join us for Knit 'n Nosh, whether you're a new knitter and just learning how, or an old hat. If you have kids at religious school, just drop them off and then join us for conversation and handiwork! Congregants without children in the religious school are also warmly welcomed. Feel free to bring coffee, tea, and nosh. For more information, contact Lisa Hoffman at 215-635-9996.

### THE HAZON / TUV HA'ARETZ "FOOD FOR THOUGHT"

Sunday, October 19, at 12:00 p.m.

#### "Lowering Your Carbon Footprint - How and Why Your Home's Energy Performance Matters"

Guest speaker Ben Adams, a *Tuv Ha'aretz* and Kol Ami member with local green-building consulting firm McGrann Associates will speak on:

- how your home fits into the big energy picture,
- what really works to save energy at home,
- how efficient and comfort can work together, and
- what's happening in Harrisburg to support greening our homes.

### ISH EVENT - FALL FEST BEER TASTING

Saturday, October 25, at 7:00 p.m.

Home of Sherry Cohen and John Miles, Jenkintown

Bring your favorite beer and bar snack to share! RSVP to Sherry at 215-885-2436 or shcohen361@comcast.net.

### CONGREGATION KOL AMI'S FALL BLOOD DRIVE

Monday, October 27, 1:30-7:30 p.m. in the Social Hall

Our area hospitals, cancer treatment centers, and research centers need you to donate the gift of life—blood. The American Red Cross depends on the generosity of Congregation Kol Ami to help those battling life-threatening illnesses by holding successful blood drives. To schedule an appointment, please contact co-chairs Sharon Myers at 215-938-7435 or myers2000@aol.com or Elaine Stevens at 215-635-3110 or execdir@kolami.info.

### FOURTH TUESDAY IN OCTOBER WITH RABBI HOLIN

October 28 at 8:30 a.m.

West Avenue Grill in Jenkintown

Join Rabbi Holin and other members of the congregation at this delightfully informal and nutritious hour-long breakfast

chat about current events in the Jewish and secular world, new movies or books, or transitions in our lives. This is a wonderful way to share ideas and get to know each other better! Call Rabbi Holin at 215-635-4182 to let him know that you'll break bread with him.

### BLESSING OF PETS

Saturday, November 1, at 3:00 p.m., Kol Ami Meadow

"Beasts of every kind, cattle of every kind, creatures of every kind that creep on the earth, and all birds of every kind, every winged thing." (Genesis 7:14)

What could be more fitting on *Shabbat* Noah (and the story of the ark) than to gather with our pets to bless them? Join Rabbi Holin and Rebecca outside on the meadow as we sing, bless, and caress our pets for our second annual Blessing of Pets!



PHOTO CREDIT: JEFF COHEN (2007 PET-BLESSING EVENT)

### A TASTE OF PHILADELPHIA

Friday, November 7, following services

Join us at our First Friday service to hear a post-service presentation and see a slideshow about the history of Jewish Philadelphia. The Philadelphia Jewish Archives Center (PJAC) will present a slideshow highlighting the history of the Jewish community in Philadelphia, including the life of Rebecca Gratz, the various waves of immigration, Jewish businesses, and charitable organizations and publications. PJAC is the central repository for the Philadelphia-area Jewish community's records from the early 1800s to the present. The presenter will be Helaine Greenberg, who has a doctorate in social work from the University of Pennsylvania.

## **FAMILY HAVDALAH SING AND LEARN**

**Saturday, November 8 at 4:00 p.m.**



Join us in the sanctuary to sing, learn, and celebrate *Havdalab*, the beautiful service that separates *Shabbat* from the rest of the week. This promises to be a fun *kumzitz* {get together} in

which everyone can participate with Rabbi Holin and Rebecca, or, if you prefer, you can simply just sit and listen.

We'll begin the celebration with snacks and beverages for adults and kids. Feel free to bring your own wine as we mix and mingle, greeting faces known and new! We'll then warm up by singing some familiar melodies and learning new ones as well. Finally, we'll celebrate a *Havdalab* service featuring spice boxes, *Kiddush* cups, and *Havdalab* candles. Please bring your own if possible. You can purchase them at any Judaic shop. We'll have a few extra candles available at the service.

The service is open to all congregants and their friends! If you have questions or need transportation, please contact Worship Enhancement Committee co-chairs Jeffrey Cohen at 215-635-3232 or David Hyman at 215-236-0872. ■

---

## **COMMUNITY EVENTS**

### **SORT DONATIONS AT THE SHARE WAREHOUSE**

**Sunday, October 19 from**

**10:00 a.m.-12:30 p.m. ... or ... 12:30 to 3:00 p.m.**

**SHARE Food Program Warehouse**

**2901 W. Hunting Park Avenue, Philadelphia**

Continue the High Holiday *Mitzvah* by helping with The *Mitzvah* Food Project, which depends on hundreds of volunteers to help sort and package donated food items to be delivered to our five pantry locations. Please RSVP to [dmulligan@philafederation.org](mailto:dmulligan@philafederation.org).

### **MITZVAH MANIA - A CALL TO ACTION**

**Sunday, November 2, from 9:00 a.m.-3:30 p.m.**

**Myer and Rosaline Feinstein Campus in Northeast Philadelphia**

For as long as Jews have lived in Greater Philadelphia, Jewish leaders have given a hand up to others during their times of greatest need. To continue this rich tradition of repairing the world, the Jewish Federation of Greater Philadelphia will host its second annual *Mitzvah* Mania event.

Hands-on efforts volunteers can sign up to:

### **Feed the Hungry**

- Prepare blizzard bags, breakfast bags, and thanksgiving baskets;
- Help prepare meals for the JCC's Home-Delivered Meal Program; and
- Sort canned goods for food drives.

### **Enhance the Neighborhood**

Clean up, mulch, plant, and install benches at Poquessing Park, Academy and Torrey Roads, part of the Fairmount Park System.

### **Repair Homes**

Repair, clean, and winterize homes for at-risk seniors with our partner Rebuilding Together Philadelphia.

### **Promote L'dor V'dor**

- Build a playground at the JCC's Klein Branch,
- Participate in clothing and warm-blanket drives,
- Visit seniors and drop off gift bags, and
- Participate in an intergenerational lunch (teens).

### **Beautify the Neighborhood**

Paint a mural at the JCC's Klein Branch with our partner Philadelphia Mural Arts Program.

### **Enhance the Community**

Clean and beautify the Feinstein Campus, including the areas around Federation Housing, JCC's Klein Branch, and Federation Early Learning Services.

### **Create Your Own Project**

Come up with a worthy cause, and the Federation will help you recruit volunteers by posting it on the *Mitzvah* Mania website at [www.jewishphilly.org](http://www.jewishphilly.org). Plus, you'll get great *Mitzvah* Mania t-shirts to give to volunteers.

Visit [www.jewishphilly.org/mitzvahmania](http://www.jewishphilly.org/mitzvahmania) for more information.

### **INTERFAITHWAYS FAMILY SHABBAT WEEKEND**

**November 14-16**

Kol Ami is proudly joining a regional effort to integrate interfaith families into synagogue life through programming, education, and discussion throughout the weekend. Look for more details in next month's bulletin. For information about the InterFaithways Family Support Network, please call 215-207-0990. ■

## SYNAGOGUE LEADERSHIP

### Main Office

215-635-3110

### Rabbi Elliot J. Holin

215-635-4182

### Jennifer Streitwieser, President

215-635-0304

### Guy Appel, Vice President

215-938-9330

### Adena Johnston, Vice President

215-663-9299

### Ellen Friedman, Secretary

215-635-3232

### Ted Kapnek, Treasurer

215-641-9955

## PROFESSIONAL STAFF

### Elaine Stevens, Executive Director

215-635-3110

### Rabbi Selilah Kalev

#### Director of Education

215-635-7106

### Sheri Cutler

#### Director of Nursery School

215-635-4180

### Rebecca Schwartz, Cantorial Soloist

215-572-6094

### Please send correspondence to:

Congregation Kol Ami  
8201 High School Road  
Elkins Park, PA 19027

**Website:** [www.kolami.info](http://www.kolami.info)

## BULLETIN SUBMISSIONS

Please send articles by the 5th of the previous month (e.g., by October 5 for the November issue) to Debra Share, copy editor, at [debra\\_share@merck.com](mailto:debra_share@merck.com). Articles may be edited as needed. Photographs/images to be included should be at least 3 by 5 inches in size and 300 dots-per-inch resolution to ensure good reproduction. Please check your camera's user guide for instructions on setting image resolution. ■

## **MORE THANK-YOU'S TO OUR RELIGIOUS SCHOOL CHILDREN**

### Israel Guide Dog Center for the Blind

by Norman L Leventhal, President

Thank you very much for your gift to help blind Israeli veterans and civilians regain their lives by giving them independence, mobility, and self-confidence as well as a very special companion. Your gift along with others we receive will help us to provide guide dogs and profoundly liberate those whose lives are impacted by blindness.

The guide dog process begins with a new litter of puppies who stay with their mother for two months and then are placed in the homes of puppy-raising families for a year, where they learn socialization and other skills. The puppies learn right from left and right from wrong. No begging at the table, no sleeping on couches, and no chasing cats. These dogs must learn discipline, but also lead happy, active lives. It involves hundreds of miles of walking, a lot of perseverance and a ton of patience, but our puppy raisers say it's all worth it. At the end of the year, the dogs are evaluated and if they make the grade, are then trained for five to six months.

The guide dogs learn to sit, stay, turn right or left on command and to ignore any distractions, including other animals while working. It must guide the blind person safely around pedestrians and obstacles, including overhead obstacles. The dogs are then carefully matched with our blind applicants who then begin their three-week intensive course of instruction at the Center—followed by one week at home going through their normal daily routine—to work, to the market, to the post office, to the bank, to the vet, etc. At the completion of their instruction, the students graduate to a life of independence and renewed self-confidence with their guides.

Thanks again for your caring and support of our efforts to help blind Israelis. If your Congregation is planning a trip to Israel, please include a visit to the guide dog center on the itinerary. I can promise that the participants will be amazed by what they “see.” ■

### Philadelphia Ronald McDonald House

by Juan Guerra, Director of Development

Thank you for your most generous contribution to the Philadelphia Ronald McDonald House. It was so kind and thoughtful of your religious school, the Congregation Kol Ami to collect *tzedakah* (charity) to help the children and families here.

We are grateful that your students recognize the need to provide a home away from home for families whose children are being treated at Philadelphia hospitals. For these families, our house becomes not only a source of practical assistance, but a place where they can relax in a homelike atmosphere and enjoy the companionship of others who are undergoing similar hardships. They become, for the time they are here, part of our extended family. With your gift, you and your students share in the Ronald McDonald family.

Thank you for helping with our mission and helping us care for the over 2,350 families who last year called us *home*. We appreciate your friendship and ongoing support. ■

# KOL AMI OCTOBER 2008 AT A GLANCE

Sunday	Monday	Tuesday	Wednesday	Thursday	Friday	Saturday
<b>5</b> Religious School 10:00 a.m. to Noon 9:45 a.m. - Adult Choir Rehearsal 10:00 a.m. - Color War Challenge 12:00 p.m. - Student Choir Rehearsal	<b>6</b> Landscape & Property Enhancement Committee Meeting 7:30 p.m.	<b>7</b> Nursery School 9:30 a.m. - Fitness	<b>8</b> Nursery School 9:30 a.m. - Jewish Program Specialist No Afternoon Program - Yom Kippur No Religious School Kol Nidre Service 8:00 p.m.	<b>9</b> No Nursery School Yom Kippur Services 10:00 a.m. - Adult Service 10:00 a.m. - Children's Service for Grades 3-6 2:00 p.m. - Children's-Family Service 3:00 p.m. - Meditative Svc 3:45 p.m. - Afternoon Svc 5:30 p.m. - Yizkor-Neilah	<b>10</b> erev Shabbat Service 7:30 p.m.	<b>11</b> Bar Mitzvah of Daniel Fishbein 10:00 a.m.
<b>12</b> Religious School 10:00 a.m. to Noon 9:45 a.m. - Adult Choir Rehearsal 10:00 a.m. - Meeting with 4th grade parents for Bar/ Bat Mitzvah scheduling 10:05 a.m. - T'filah Gr K-2 11:40 a.m. - T'filah Gr 3-7 12:00 p.m. - Student Choir Rehearsal Knit 'N Nosh - 10:00 a.m. Junior Youth Group Sukkah Party Gr 4-5 @ 1:30 p.m. Home of Rosalind Holtzman and Eric Gonzalez 215-635-0667	<b>13</b> erev Sukkot Service 7:00 p.m.	<b>14</b> Sukkot Service 10:00 a.m. No Nursery School - Sukkot Adult Education Committee Meeting 7:30 p.m.	<b>15</b> Nursery School 9:30 a.m. - Jewish Program Specialist Religious School - 4:00 p.m. & 6:30 p.m. 6:30 p.m. - Adult B'Nai Mitzvah Class	<b>16</b> Nursery School 10:00 a.m. - Sign Language Jewish Education with Rabbi Holin 7:30 p.m. The Philosophy of Martin Buber: "A Life of Dialogue"	<b>17</b> erev Shabbat Service 7:30 p.m. Adult Choir Participation	<b>18</b> Shabbat Service 10:00 a.m. Torah Dialogue and Jewish Journeys
			<b>1</b> No Nursery School No Religious School Tashlikh Service High School Park 5:30 p.m. - Picnic (upper level) 6:00 p.m. - Service	<b>2</b> Nursery School 10:00 a.m. - Sign Language Finance Committee Meeting 7:30 p.m.	<b>3</b> First Friday erev Shabbat Service 6:30 p.m. - Dinner 7:30 p.m. - Prayers and Music of Yom Kippur	<b>4</b> Shabbat Service 10:00 a.m. Torah Dialogue

# KOL AMI OCTOBER 2008 AT A GLANCE (CONTINUED)

Sunday	Monday	Tuesday	Wednesday	Thursday	Friday	Saturday
<b>19</b> Religious School 10:00 a.m. to Noon 9:45 a.m. - Adult Choir 10:05 a.m. - <i>T'filah</i> Gr K-2 10:30 a.m. - IMW Students with Rabbi Holin 11:40 a.m. - <i>T'filah</i> Gr 3-7 12:00 p.m. - Student Choir Worship Enhancement Committee Meeting 10:45 a.m. Hazon/Tuv'Haretz Program 12:00 p.m. "Lowering Your Home's Carbon Footprint" Guest Speaker Ben Adams Adult Education Committee Meeting 3:00 p.m. - Guest Speaker Lucette Lagrado, author of "The Man in the White Sharkskin Suit: My Family's Exodus from Old Cairo to the New World"	<b>20</b> erev Simchat Torah - Consecration Service 7:00 p.m. No Nursery School - Simchat Torah	<b>21</b> Simchat Torah Service 10:00 a.m. No Nursery School - Simchat Torah	<b>22</b> Nursery School 9:30 a.m. - Jewish Program Specialist Religious School 4:00 p.m. & 6:30 p.m.	<b>23</b>	<b>24</b> Kids@Kol Ami Shabbat with Student Choir Participation Nursery School 6:00 p.m. erev Shabbat Service 8:00 p.m.	<b>25</b> Shabbat Service 10:00 a.m. Torah Dialogue and Jewish Journeys ISH Event 7:00 p.m. Fall Fest Beer Tasting Home of Sherry Cohen and John Milles 215-885-2436
<b>26</b> Religious School 10:00 a.m. to Noon No adult or student choir 10:00 a.m. - Family Educa- tion Program - Grades K-1 10:05 a.m. - <i>T'filah</i> Gr K-2 11:40 a.m. - <i>T'filah</i> Gr 3-7 Religious School Committee Meeting 10:00 a.m. Violin Concert - 3:00 p.m. Gil Morgenstern Reflections: Sacred Landscapes	<b>27</b> Nursery School Hay Ride & Pumpkin Picking at Kohler Farms 10:00 a.m. Congregation Fall Blood Drive 1:30 to 7:30 p.m. Contact Sharon Myers at 215-938-7435 for an appointment	<b>28</b> Fourth Tuesday with Rabbi Holin 8:30 a.m. West Avenue Grille Nursery School 9:30 a.m. - Fitness 7:00 p.m. - Parent Night	<b>29</b> Jewish Education with Rabbi Holin 9:00 a.m. The Philosophy of Martin Buber: "Life of Dialogue" Nursery School 9:30 a.m. - Jewish Program Specialist Religious School 4:00 p.m. & 6:30 p.m. 6:30 p.m. - Adult B'Nai Mitzvah Class	<b>30</b> Nursery School 10:00 a.m. - Sign Language Jewish Education with Rabbi Holin 7:30 p.m. The Philosophy of Martin Buber: "A Life of Dialogue"	<b>31</b> erev Shabbat Service 7:30 p.m.	<b>NOV 1</b> Shabbat Service 10:00 a.m. Torah Dialogue Blessing of Pets 3:00 p.m.

## KOL AMI CONTRIBUTIONS

We thank the following individuals for their donations to Kol Ami funds. If you would like to donate to any of the established Kol Ami Congregation funds, send your contribution to Congregation Kol Ami, 8201 High School Road, Elkins Park, PA 19027, and indicate to which fund the donation should be applied.

### BAR/BAT MITZVAH AND CONFIRMATION FUND

In Memory of:

#### **Burton Webber**

*Craig, Sharon, Wes, and Erin Myers  
Merle Salkin*

### ONEG SHABBAT FUND

In Honor of:

#### **Special Birthday of Ellen Asam**

*Bruce and Ellen Asam*

#### **Rebecca Schwartz**

*Morton and Marcia Wolpert*

### RABBI'S DISCRETIONARY FUND

In Honor of:

#### **Rabbi Elliot Holin**

*Michelle Carter and Kevin McColaugh*

In Memory of:

#### **Joyce Levin**

*Byron Schader*

#### **Gay Schader**

*George and Juliette Arnold  
Stewart and Sally Eisenberg*

### RELIGIOUS SCHOOL FUND

In Memory of:

#### **Burton Webber**

*Joel Fishbein and Rachel Ezekiel-Fishbein*

### SYNAGOGUE FUND

*Bart and Nadine Weiner*

In Honor of:

#### **Birth of Ethan Roland Garvin**

*Stewart and Sally Eisenberg*

#### **Special anniversary of**

#### **Rabbi Elliot and Susan Holin**

*Elaine Stevens*

In Memory of:

#### **Sol Adelman**

*Stanton and Merle Salkin*

#### **Beatrice Bienstock**

*Joseph and Phyllis Bienstock*

#### **Michael Bienstock**

*Joseph and Phyllis Bienstock*

#### **Solomon Haas**

*Andrew and Shari Johnson*

#### **Edythe Greenfield**

*Stewart and Sally Eisenberg*

#### **Ruth Marcus**

*Harold and Shirley Horowitz* ■

## **AMERICAN FRIENDS OF MAGEN DAVID ADOM SENDS ITS APPRECIATION**

by **Daniel Allen, CEO**

Thank you for supporting the vital work of American Friends of Magen David Adom (AFMDA) with your generous contribution. Because of you, MDA's team of trained volunteer and professional medical responders are able to provide the entire nation's pre-hospital emergency needs, including medical, disaster, ambulance, and blood services. Whatever the situation and wherever the need arises, MDA is on call 24 hours a day, 7 days a week.

MDA has over 100 Emergency Medical and Dispatch Stations (EMDS) in communities throughout Israel, many of which have been built and upgraded by our supporters like you. Your support has also been crucial to maintain MDA's fleet of 700 ambulances, including specially equipped Mobile Intensive Care Units (MICUs) and bloodmobiles that take care of nearly half a million patients annually.

Every day brings new challenges for MDA in Israel. Upgrades and continual training is necessary to maintain paramedic's skills and to keep MDA abreast of the latest technology. Many MDA EMDSs also need to be upgraded and expanded. The MDA National Blood Services Center, which meets 100% of the blood needs of the Israel Defense Forces and 97% of the blood needs for the entire nation, urgently needs to modernize and expand its research and blood-storage facilities. The MDA Israel Cord Blood Center also requires funding for stem-cell research to find ways to treat cancer and other medical issues.

In the past five years, hundreds of thousands of AFMDA supporters have given over \$90M to purchase medical supplies and ambulances. We would like to thank you for your support. Thanks to the generosity of people like you, AFMDA has been able to provide urgently needed funds to MDA for more than 65 years. ■



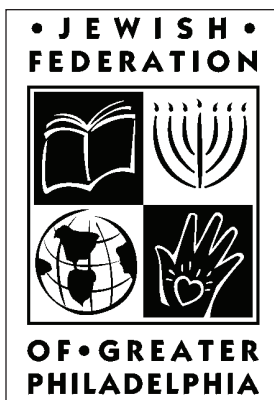
Congregation Kol Ami  
8201 High School Road  
Elkins Park, PA 19027

TO:

---

## A THANK-YOU FROM THE JEWISH FEDERATION OF GREATER PHILADELPHIA

by Karen Golden, Director, Community Campaign



On behalf of the Jewish Federation of Greater Philadelphia, I want to thank you for your very generous gift that you recently shared with the Federation on behalf of children of the Kol Ami religious school. What makes this gift so special is the fact that these young children made the effort to bring in the *tzedakah* money in order to sup-

port our Jewish community.

The children's contribution makes a significant statement about their, their families', and their school's commitment to repairing our world. Through their gift, they

are helping the Federation to care for the seniors of our community, provide hunger relief to the impoverished, enhance Jewish education in Greater Philadelphia, and support at-risk Jews in Israel. We feel very fortunate that these children chose to share their *tzedakah* with the Jewish people through the Federation.

The children of our Greater Philadelphia Jewish community are the future of our Jewish community. Knowing that they are passionate, dedicated young community members, such as your religious school students, certainly sends a bright message for our people's future. I hope you will share with the children just how important their gift is to the Jewish men, women, and children who the Federation supports. The children are truly making a positive difference in our Jewish world. ■